

► Rear Pillar Die Sets (PMSR / PMSRB)

Die Set Plain

Material :

Plate :- MS
Pillar :- En353
Bush :- En353

Hardness :

Pillar :- 55 - 58 HRC
Bush :- 55 - 58 HRC

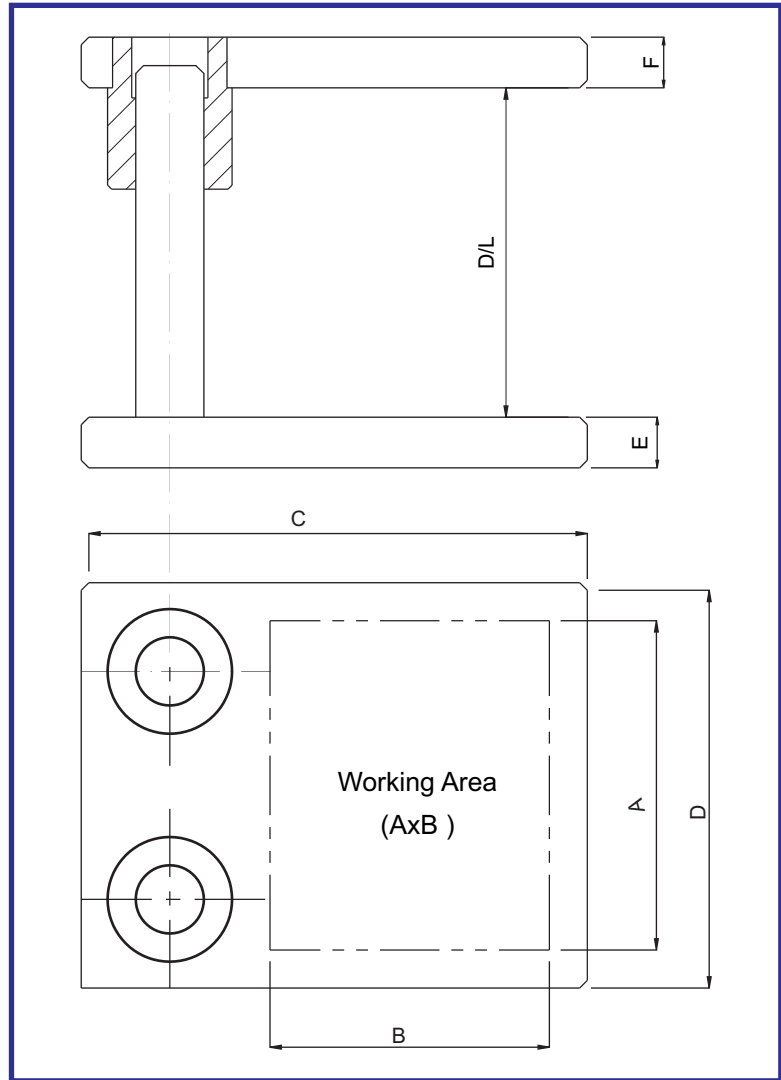
Die Set With Ball Cage

Material :

Plate :- MS
Pillar :- En353
Bush :- En353
BallCage :- Brass / Aluminium

Hardness :

Pillar :- 58 - 60 HRC
Bush :- 58 - 60 HRC



Order Type :- Code - D/L

Example :- PMSR125 X 125 -125

CENTRE DIE SET PLAIN

Code	A	B	C	D	E	F	CD	PILLAR SIZES
PMSR 75X75	75	75	130	120	25	25	64.6	20/21
PMSR 100X100	100	100	160	140	32	32	81.0	24/25
PMSR 125X125	125	125	190	165	32	32	106.0	24/25
PMSR 150X150	150	150	220	190	32	32	122.5	28/29
PMSR 175X175	175	175	240	215	32	32	142.5	34/35
PMSR 200X200	200	200	270	240	40	40	167.5	34/35

CENTRE DIE SET WITH BALL CAGE

Code	A	B	C	D	E	F	CD	PILLAR SIZES
PMSRB 75X75	75	75	140	120	25	25	57	20/21
PMSRB 100X100	100	100	170	140	32	32	72	24/25
PMSRB 125X125	125	125	200	165	32	32	97	24/25
PMSRB 150X150	150	150	230	190	32	32	117	28/29
PMSRB 175X175	175	175	250	215	32	32	137	34/35
PMSRB 200X200	200	200	280	240	40	40	162	34/35

Note : Our standard day light is 100mm. Day light to any other specification can be provided.
Die Set as per Customer Drawing can also be manufactured.